

SOLID FUEL FIRED PACKAGED STEAM BOILER



Synergy Exports Pvt. Ltd.

Office No. 26, 28 & 30, 4th Floor, Galleria Building, Near Karve Statue, Karve Road,
Kothrud, Pune - 411 038 [INDIA] Tel : +91 20 25454404 / 65008905

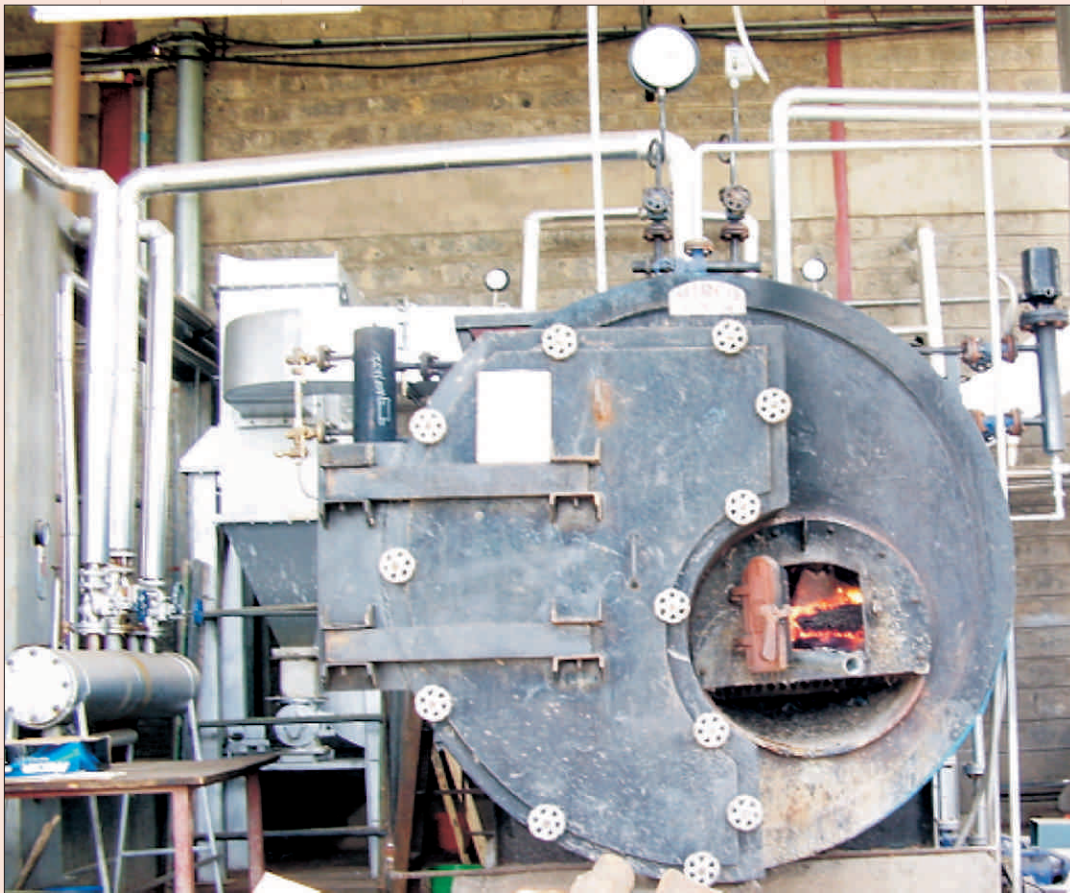
Fax : +91 20 25455640 Email : info@seplindia.co.in

Website : www.seplindia.co.in

SOLID FUEL FIRED PACKAGED STEAM BOILER

**WE CAN SUPPLY COAL / COTTON HUSK / RICE HUSK / WOOD FIRED
STEAM BOILER WITH CAPACITY FROM 500 KG/HR TO 4000 KG/HR**

WOOD FIRED PACKAGED STEAM BOILER



TECHNICAL SPECIFICATION

MODEL	UNIT	500	800	1000	1500	2000	2500	3000	4000
Evaporation F&A 100°C	kg/hr	500	800	1000	1500	2000	2500	3000	4000
Rating	m ²	21	34	42	63	85	105	125	172
Working Pressure	Kg/cm ²	← 10.54kg/cm ² to 17.5kg/cm ² →							
Efficiency on NCV	%	← 76±2% →							
Coal Consumption	kg/hr	80	128	160	240	320	400	480	640
Design Code		← IBR or ISO/R-831 or ASME or BS →							
Electric Supply		← 415 Volts,50Hz,3-Ph,4 Wire →							
Feed Pump	HP	3X2	5X2	5X2	7.5X2	7.5X2	7.5X2	7.5X2	7.5X2
ID Fan	HP	3	5	5	7.5	10	12.5	15	20